

# CyberChrome OnColor™ Match

Versatile, easy-to-use OnColor Match software brings you the best user experience with color-matching software in the industry. That's why our customers keep coming back for more. OnColor quickly and accurately calculates and predicts color matches in a wide variety of applications,

including coatings, plastics, textiles, inks, cosmetics, ceramics, and others. It is engineered to give you the highest level of accurate "first-shot" color matches and to minimize production corrections. It combines an intuitive interface to make operators quickly comfortable and productive with advanced, integrated features that help you streamline your formulation, correction and quality inspection operations.

Teamed with any of the available portable or benchtop color spectrophotometers on the market today, OnColor Match software can give you a powerful competitive advantage to increase overall production and enhance responsiveness to customer's stringent demands. Integrated with our new tools for instrument profiling and instrument performance certification,

OnColor tightens your inter-instrument agreement and keeps track of the performance of your fleet of spectrophotometers so that you can share color standards and databases electronically with confidence and success.

OnColor Match software helps you speed customer orders by reducing laboratory "hits" and minimizing the adjustments needed to a formula by 50 percent or more compared to traditional methods. It replaces time-consuming trial and error with high-speed, intelligent computer color-matching. From a stored database of colorants, it calculates in seconds the best match, least cost, and least metameric formulas.



CyberChrome, Inc. / 3642 Main Street, Stone Ridge, NY 12484  
Tel: 845-687-2671 / Email: [sales@cyberchromeusa.com](mailto:sales@cyberchromeusa.com)  
[www.cyberchromeusa.com](http://www.cyberchromeusa.com)

OnColor is a trademark of CyberChrome, Inc. All other products mentioned are registered trademarks or trademarks of their respective companies. Copyright © 2013 CyberChrome, Inc. All rights reserved.

## With OnColor Match software you can select:

- All possible combinations of colorants.
- Or choose only those colorants tagged with a certain attribute, such as high temperature stability, outdoor weatherability, FDA approved, etc.
- Automatic or manual color matching: measure a target color in automatic mode and let the software generate the best starting formula for you. Or, input a trial formula manually and let the software quickly compute its spectral curve and output its probable color difference and metamerism. Either way, almost instantly you can compare your predicted formula with the target color you are attempting to match.

## With OnColor Match software you can make:

- Matches to new colors by searching and correcting your existing shade library of proven formulas; tap into all the knowledge and information already stored in your database and use that to generate a match to a new color.
- New matches from waste work-off or recycled materials; OnColor Match software can incorporate these materials into new color recipes at acceptable rates to help you work-off waste, reducing the amount of new raw materials used as well as reducing associated disposal costs of the waste or overrun.

## OnColor makes matching easy and intuitive:

Match a new color in three easy steps:

- Recall the property file that contains all the pre-set parameters for the match
- Measure the color standard that you want to match
- Type "M" to run the match and view the results

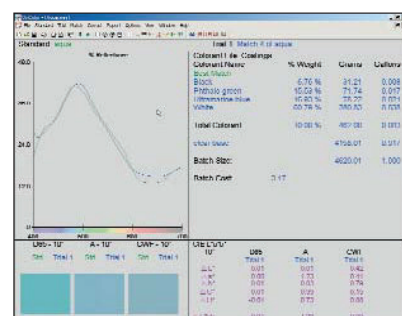
Print a label of the formula you choose to make and use it to label the sample, put it on the can of paint, or paste it into a lab notebook – or do all three! You can even bar-code the sample for easy recall.

Store the match in the database to build a library of all of your "hits." It's easy and simple – for the best user experience in the industry!

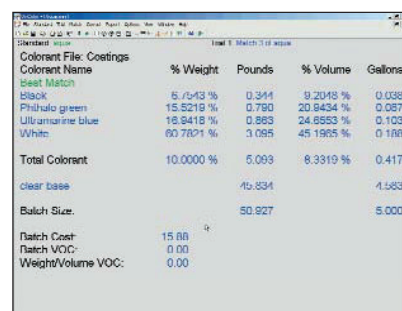
## Cut production adjustments

In the real world of color-matching, lot-to-lot variations in raw materials, process variables, and human errors such as misweighs and sample preparation errors, often make production adjustments unavoidable – even when your laboratory match is perfect. OnColor Match software gives you a range of options which help you minimize the time spent on batch corrections.

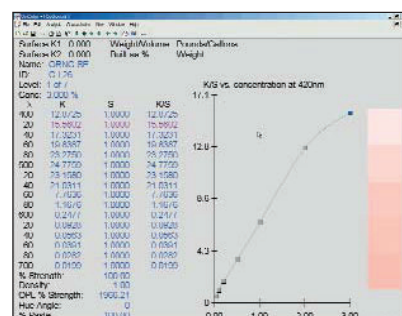
**Automatic Add.** OnColor Match software automatically calculates any additional colorant needed to bring your production back to target.



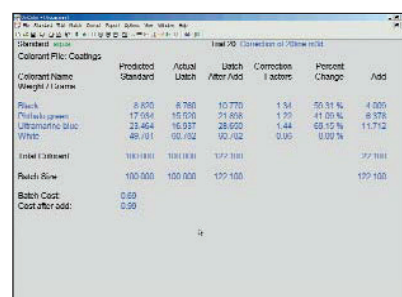
### 1. Color match



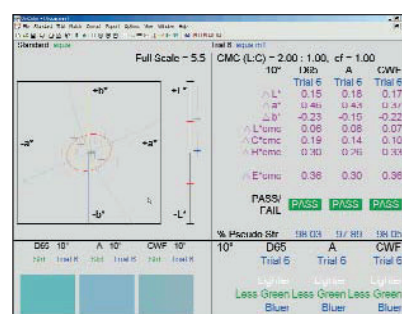
### 2. Formula detail



### 3. Database



### 4. Formula add/adjust



### 5. Pass/fail QC

**Manual and Optimize Add.** Operators use this feature to “tweak” the add or to test their own ideas on how to fix the batch—often finding a more economical or practical way to correct the batch to an acceptable color difference.

**Batch History.** Use the batch history feature to review what adjustments were made to previous batches of this color and to see where a previous batch was released.

**Batch Size Variation.** OnColor Match can calculate accurate adjustments a number of ways: When you confidently know the amounts and ingredients in the batch, OnColor uses that input to get the best correction possible. Or when only the batch size is known and not the exact amounts, OnColor can predict what is in the batch and correct the difference.

**Reduce adds or change correction factors.** OnColor Match software is versatile on the job. For example, when the effective strength of a colorant in a production batch is greater than or less than predicted, it can adjust correction factors to accommodate the actual performance of the colorant in today's batch.

### **Gain performance and flexibility**

OnColor Match software gives you the speed, accuracy and flexibility you need to respond to stringent customer demands, to operate more profitably and to build your business.

**Consistent and reliable color control.** With OnColor Match software you can decide just what level best suits various points in your operation. All levels operate seamlessly on the same databases and formats. Use instrument profiling to control and tighten the inter-instrument agreement among your instrument fleet, while using the instrument performance feature to monitor and certify the individual performance of each instrument.

**Faster Estimating.** Detailed production costing gives you faster, more accurate estimating.

**Shorter lead times.** Streamlined color matching in the lab and fewer color issues in production help you meet today's ever-tighter customer deadlines.

**More confident matching.** High speed combinatorial matching evaluates and eliminates hundreds of possibilities to give you the best possible matches no matter how difficult the color. Match more colors with fewer colorants and reduce your inventory of colorants.

**More consistent color quality.** Batch-to-batch, run-to-run, order-to-order. OnColor Match helps you produce accurate color consistently and documents your color quality for your customers...increasing both repeat order levels and reducing your need to re-submit every time. The Instrument Performance feature assures that your color numbers are accurate, consistent, and repeatable – no matter at what plant the material was made.

**Expandable, upgradeable color control.** From OnColor QC, to Match Silver, to Match Gold, choose the capabilities that you need for an expandable, compatible, upgradeable, and reliable color system with CyberChrome technology.

**Managing all aspects of a color control program.** No other software package offers the comprehensive capabilities that OnColor does. No other package includes features that include instrument profiling, instrument performance, quality control, color formulation, batch correction, and color database management. Get it all in one package without paying any yearly subscription fees. OnColor is the complete package at one, low affordable price.

### **We service what we sell.**

CyberChrome offers training and support and can customize it to your needs. From on-site training to the popular and cost-effective Internet –based training sessions, we offer it all and can use a combination of techniques to train your operators at start-up and keep them trained.

**OnColor Match Gold is the complete and comprehensive color software for all your quality control, formula, and correction needs. The Gold level is the “master” system that is ideal for central color laboratories that generate the complete databases of colorants and color standards used in color matching and correction applications throughout your company or enterprise. It includes the colorant characterization module used to build and maintain the colorant database.**

**OnColor Match Silver includes all the features needed to perform color matching, batch correction, quality control, instrument certification, and waste-workoff. It also provides the shade library and formula storage database used for color searches, search and correct to a new target color, and for storage of batch history of formula and adjustments. The Silver level is designed for satellite plants and laboratory operations where the colorant database is supplied by another user of the OnColor Gold software.**

**Both OnColor Match Silver and Gold integrate all of the quality control and instrument performance features of the OnColor QC Premium package.**

<i>OnColor Modules</i>	<i>QC Lite</i>	<i>QC Premium</i>	<i>Match Silver</i>	<i>Match Gold</i>	<i>Multi-Angle QC</i>
<b>Basic Color QC functions</b>					
Instrument Communication and Calibration for over 125 instruments	√	√	√	√	√
Sample measurement and averaging	√	√	√	√	√
Absolute and color difference with over 100 indices	√	√	√	√	√
Pass/Fail Tolerancing - all methods	√	√	√	√	√
2D & 3D Color Plot and Spectral Graph graphical report screens	√	√	√	√	√
All current color spaces, color differences; illuminants, and observers	√	√	√	√	√
Instrument Profiling	√	√	√	√	√
<b>Advanced QC features:</b>					
User defined report screen plus Data Table, Tolerance Plots, Statistics		√	√	√	√
Password Security		√	√	√	√
Macros		√	√	√	√
Database of Standards		√	√	√	√
Instrument Performance Module		√	√	√	√
<b>Match Silver Formulation</b>					
Color Formulation for all application methods			√	√	
Batch Correction			√	√	
Formula Storage and Retrieval			√	√	
Batch History Retrieval			√	√	
<b>Match Gold Formulation</b>					
Colorant Characterization Functions				√	
<b>Multi-Angle QC</b>					
Adds multi-angle instrument support					√
Data reported for "n" angles with 3D graphics and ellipses					√
Muti-angle "color travel" plots					√